



The

April 2021

Propagator

The Monthly Newsletter of the South Orange County Amateur Radio Association

In This Issue

President's
Message1

General Meeting
.....2

Soara Elmer
Saturday.....3

Membership....3

Election Results
.....4

Donated Power
Supplies
.....5

Multi-Output
Bench Supply. .7

Soara
Library/Nets ...9

Sale Mail List.10

GotoMeeting. 11

General Meeting

April 19, 2021
7:00 PM
via Zoom

Presidents Message - April 2021

Well, as the pandemic appears to be winding down, especially here in OC, we still have to make accommodations and adjustments to our SOARA meetings and events. Also, remaining mindful the other parts of the country are seeing renewed surges, with some states seeing new outbreaks of Covid matching earlier peaks. Here's where we are so far:

For the near future, at least, we will continue to hold our SOARA monthly meetings virtually. The City of Mission Viejo has notified us, that by decision of the City Council, the Norman P. Murray Community and Senior Center (our regular meeting location) will remain closed for the rest of 2021! if the projections of our being able to safely gather in groups by July hold true, then we will actively search for a substitute venue. If anyone knows of a suitable place the club may use or rent economically that will hold 50 to 75 persons for a meeting, please let us know so we can look into using it.

As for Field day, we are applying to the City Parks and Rec. Department to use Gilleran Park once again. For the first time, we have to provide them with a detailed description of the event, our activities, number of attendees expected at any one time, etc. We await a decision from them once we provide them with the requested information, Needless to say, it's most likely that Field Day will be an abbreviated version of our typical field day. We will also petition the ARRL to allow us to do a combined Field day, with possibly some members operating from Gilleran, while others may operate remotely just as we did last year. We also have an offer of a campground in the San Bernardino National Forest, North of Big Bear Lake. More on Field day soon.

We're also hoping, with the advent of warmer weather, to resume SOARA Elmer Saturdays outdoors, at a local park, or similar area.

AS always, we're soliciting thoughts and suggestions from you, our members for ways we may hold more safe SOARA events.

73 de Ray, AE6H

Contacting Soara: Questions about SOARA? Postal mail: P.O. Box 2545, Mission Viejo, CA 92690
Send e-mail to membership@soara.org or leave a message at 949-667-0173
Facebook: K6SOA Twitter: @K6SOA

Monday, March 15 at 7:00 pm. General Meeting OC Firewatch with Tony Pointer, Gordon West, Ray Hutchinson and Patti Peschel

Tony Pointer Will be our featured speaker as Orange County Fire Watch Program Coordinator, . Tony manages the Orange County Fire Watch program for the Irvine Ranch Conservancy, OC Parks, City of Irvine, and City of Newport Beach with the assistance of over 300 volunteers at 36 locations in Orange County. He will be sharing information on the activities of the Fire Watch program and the current fire situation in Southern California. Orange County Fire Watch and SOARA are currently partnered to utilize the SOARA repeater for Fire Watch deployments on Red Flag Warning days.

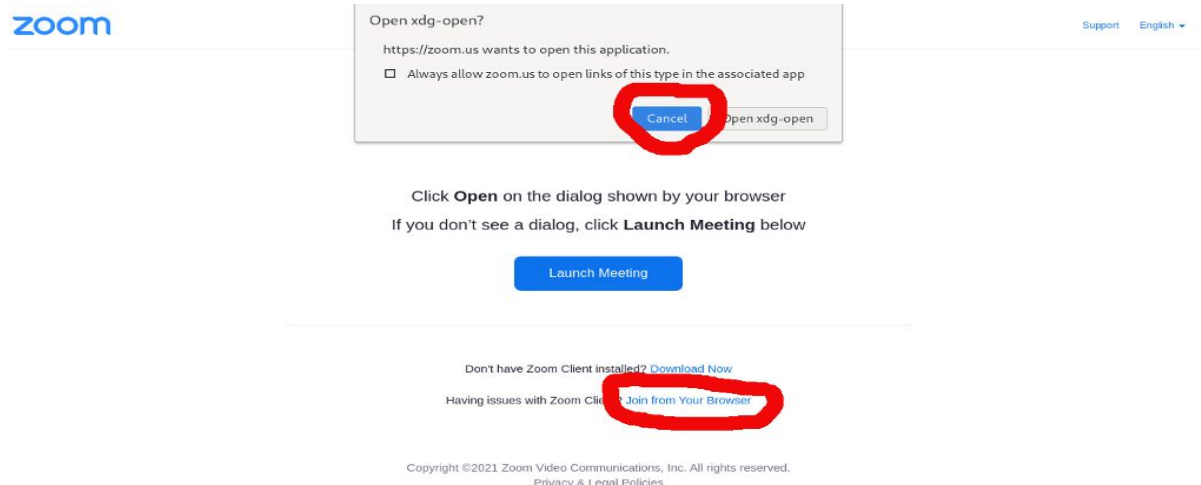
Gordon West WB6NOA will be our second speaker. Gordon West has been a licensed ham radio operator for more than 50 years and is widely-recognized as the leading ham radio educator in America. Gordon's presentation will be to promote amateur Radio and the benefits for Fire Watch as well as explain the licensing process for the non-ham volunteers of Fire Watch or those who may be interested in both.

Ray Hutchinson AE6H is the current President of the SOARA board and will explain SOARA'S involvement as a partner agency with Fire Watch and how you as a Ham Operator and a member or non-member of SOARA can get involved.

Patti Peschel AD6OH will explain the use and monitoring of the mountain top cameras, especially the ones used for OC Fire Watch. (you may not have known how many cameras are out there)

Erik - W6INE

Use this [link](#) to join the **Zoom** meeting at 7:00 p.m. You can access Zoom on Windows, but **you must install the Zoom client on your Windows machine** or you can call in by telephone and listen. If you use **Linux**, you can join the meeting with Chrome. Press 'cancel' when you are prompted to install the driver/app and use 'join this meeting using your browser' option at the bottom of the launch page.



Linux - Using Chrome

Contacting Soara: Questions about SOARA? Postal mail: P.O. Box 2545, Mission Viejo, CA 92690
Send e-mail to membership@soara.org or leave a message at 949-667-0173
Facebook: K6SOA Twitter: @K6SOA

You may also call in my telephone using one of the following numbers and enter the meeting ID of **922 8358 7447** and Passcode: **276939** when prompted:

One tap mobile

+13126266799,,92283587447#,,,,*276939# US (Chicago)

+16465588656,,92283587447#,,,,*276939# US (New York)

Dial by your location

+1 312 626 6799 US (Chicago)

+1 646 558 8656 US (New York)

+1 301 715 8592 US (Washington DC)

+1 346 248 7799 US (Houston)

+1 669 900 9128 US (San Jose)

+1 253 215 8782 US (Tacoma)

Meeting ID: 922 8358 7447

Passcode: 276939

Dale, W6EDT

SOARA Elmer Saturday/Tech Net

We have fun at SOARA Saturday events talking about all types of topics.

Since we can't meet in larger numbers at the Murray center or Gilleran park, we are having virus free radioactive technical nets. The log is here:

<https://www.soara.org/soara-saturday-log/> I try to post useful on-topic links in the log. Worth a look..

Join us Saturdays 9am, on Laguna Beach 147.645 or Santiago Peak 447.180 repeaters. Bring your questions, be there to help others, or listen in. Try having some radio fun!

If you need an Elmer go to Elmer's corner tab on SOARA's main page.

73,

Ed, WA6ED

wa6ed@soara.org

SOARA Elmer Saturday Coordinator

SOARA Membership Report

We are now at 220 active members. Welcome new 2021 members!

KB0J, Larry

NY6I, Charles

WA6RLR, Doug

KR6J, Kenan

KF6TKM, Jeff

Contacting Soara: Questions about SOARA? Postal mail: P.O. Box 2545, Mission Viejo, CA 92690

Send e-mail to membership@soara.org or leave a message at 949-667-0173

Facebook: K6SOA Twitter: @K6SOA

If You know someone that wants to join SOARA, the application signatures have been temporarily waived by the board. Applications are available on www.soara.org. The process is: fill out the application, email it to membership@soara.org, pay your new member dues & initiation fee \$90, when the board meets we will review and vote on your application.

**73,
Ed, WA6ED
SOARA Membership Director**

[SOARA Election Results](#)

Election Administration

SOARA Elections - 124 / 220 (56 %) votes cast		
Candidate Name	Call Sign	Votes
Repeater_Director		
Brian Roode	NJ6N	123
---- Abstain ----		1
Publications_Director		
Dale Tyler	W6EDT	123
---- Abstain ----		1
Membership_Director		
Ed Barnes	WA6ED	124
---- Abstain ----		0
Education_Director		
Steve Kuver	K6UVR	122
---- Abstain ----		2
Technical_Director		
Tom Hobbs	AE6SH	122
---- Abstain ----		2
Communications_Director		
Heiko Peschel	AD6OI	121
---- Abstain ----		3

Voters who have cast ballots									
Voter	Voter	Voter	Voter	Voter	Voter	Voter	Voter	Voter	Voter
aa6ug	ab6cp	ab6ns	ad6at	ad6oh	ad6oi	ae6h	ae6sh	ae6xe	af6xp
ag6vq	ai6ou	ai6we	aj6ee	aj6lu	k0pge	k0xp	k5mgh	k6chr	k6dmt
k6eee	k6fry	k6hiv	k6iwa	k6jkb	k6lmr	k6msm	k6nov	k6nr	k6rjo
k6tjo	k6whc	k6wkb	k7kce	kb7v	kc6act	kc6fzy	kc6krb	kc6rlc	kd6ksp
kd7jhr	ke6bxt	ke6ccc	ke6gqo	ke6tm	kf6qoe	kf6qpc	kg6lzp	kg6qwy	ki6apg
ki6ddb	ki6iyy	ki6she	ki6vpb	ki6wjx	ki6wjy	kj6aik	kj6bvt	kj6fcc	kj6oza
kk6bml	kk6chf	kk6le	kk6ogr	kk6ogs	kk6umb	km6afi	km6foy	km6fpb	km6fpe
km6jbs	km6jos	km6rxj	km6yne	kn6asr	kn6bmr	kn6cly	kn6cvb	kn6cxd	kn6foa
kn6hdb	kn6jhp	kn6ken	kr6iss	ks6rfl	n2gpd	n6jwl	n6pm	n6rrv	n6snx
n6veg	nh7wg	ni6x	nj6n	nr6e	ny6l	nz1m	w6bik	w6bot	w6cic
w6ckc	w6edt	w6ine	w6sqq	w6trg	w6uxd	w8rrv	w9tqc	wa0jro	wa2kdx
wa6ed	wa6ldi	wa6pri	wa6ruz	wa6ves	wa9sgd	wb6ggf	wb6hro	wb6noa	wb6rdo
wb6ycq	we4by	wi6x	wo5h						

Election Results as of April 18

Contacting Soara: Questions about SOARA? Postal mail: P.O. Box 2545, Mission Viejo, CA 92690
 Send e-mail to membership@soara.org or leave a message at 949-667-0173
 Facebook: K6SOA Twitter: @K6SOA

[Items Donated to SOARA](#)

Recently, SOARA received a generous donation of a number of fixed voltage power supplies. All are switchers that are relatively RF quiet and put out the rated voltage and current, except for the medical grade supply., which is linear and will not start into full load and has somewhat poor load regulation above about 2A (-10% rated voltage)

All of these items are being offered to SOARA members for a very reasonable price. If you would like any of these supplies, please email me, w6edt@soara.org with a list of the item(s) you want and the amount you would like to bid. You may obtain multiples of any of the items.

Dale Tyler (W6EDT)

We have about 16 Medical Grade Supplies: 5V, 3A (2A) with 3.5mm plug and medical grade power cord.



Contacting Soara: Questions about SOARA? Postal mail: P.O. Box 2545, Mission Viejo, CA 92690
Send e-mail to membership@soara.org or leave a message at 949-667-0173
Facebook: K6SOA Twitter: @K6SOA

14 Protek 18V 7.25A supplies with a 5.5x2.5mm plug. Uses modular power cord.



26 Protek 9-11V 3.4A 5.5x2.2mm uses modular power cord(9.9V 3.4A)

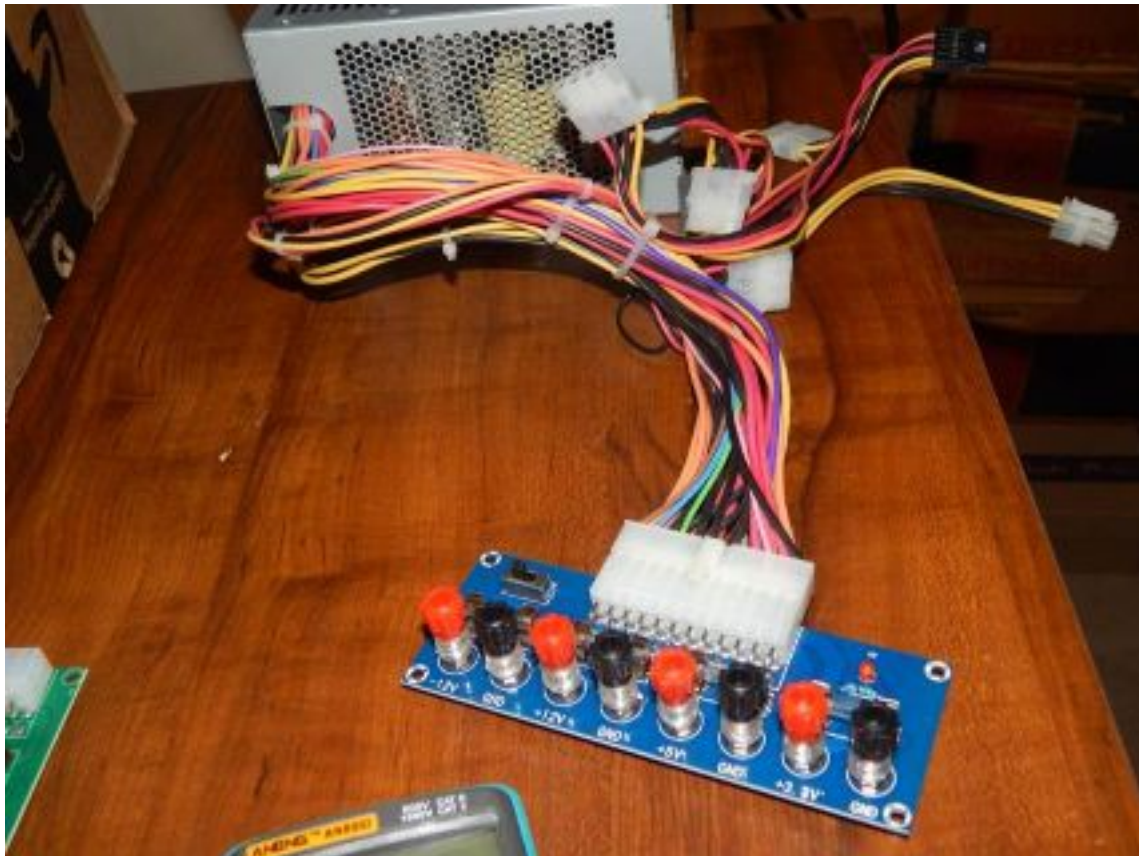
53 Concom 5V 2A wall wart supplies with a 5.5x2.2mm plug



50 Trumpower 4.65V 2.15A supplies with a 3.5mm plug (4.22V @ 2.15A)

Contacting Soara: Questions about SOARA? Postal mail: P.O. Box 2545, Mission Viejo, CA 92690
Send e-mail to membership@soara.org or leave a message at 949-667-0173
Facebook: K6SOA Twitter: @K6SOA

[Bench Multi-Output Power Supply for Students and Hobbyists](#)



A versatile lab power supply can be assembled from an old ATX supply from a desktop PC. These supplies are available from around \$20 on ebay and \$40 on Amazon. They may be found for next to nothing at swap meets and even free from a friend's garage or junk box.



Contacting Soara: Questions about SOARA? Postal mail: P.O. Box 2545, Mission Viejo, CA 92690
Send e-mail to membership@soara.org or leave a message at 949-667-0173
Facebook: K6SOA Twitter: @K6SOA

All you need is to attach an interface connector to the main output connector and you are in business. The perfect device shown below is from banggood.com "Geekcreit® XH-M229 Desktop Computer Chassis Power Supply Module ATX Transfer Board Power Output Terminal Module." Priced at \$5.00 shipping included (You cant buy the connectors for that.). It is quite a deal.



The result is a four output supply great for repairs, development, and experimenting.

The four outputs are:

+3.3V, 5A for two AA/AAA battery or 3.6V Lithium battery replacement, low voltage digital experiments, etc.

+5.1V, 5A for digital experiments, circuit development,

+12V, 5A for battery operated radios, analog circuits experiments.

-12V, 5A used with the +12V for dual voltage circuits such as Operational Amplifiers.

Most 9V and 15V circuits will operate fine from 12V but in the case of 9V, check the electrolytic capacitors for maximum voltage.

Knute Josifek, k6hiv@soara.org

[SOARA Library/Nets](#)

As some of you have already heard the AD6OI/SOARA Library is now up and running at our house. (Please see attached picture for details). This library contains ARRL Handbooks, Repeater location guides, Tech modification books, radio and electrical books and a wealth of radio related information. For now the library will be open from 1pm to 4pm on Saturdays, and other times by appointment, if you call first, either by radio or telephone. E-mail will also work but allow at least 24 hours for a reply.



In other news, when using SOARA repeaters there are some things that it might interest you to know.

It is always good to key down for several seconds when first waking up your favorite repeater, otherwise the beginning of your announcement won't be repeated.

Also if you are in an extended conversation please leave room for others to break with their call sign.

It is never good form to interrupt a conversation with a comment. Using your call sign to identify yourself is usually sufficient to get the attention of the individuals involved in a conversation (aka QSO). When recognized feel free to go ahead with your comment.

Contacting Soara: Questions about SOARA? Postal mail: P.O. Box 2545, Mission Viejo, CA 92690
Send e-mail to membership@soara.org or leave a message at 949-667-0173
Facebook: K6SOA Twitter: @K6SOA

You can find a summary of all of our nets at [SOARA Net Schedule](#)

**Thank you
Heiko AD6OI
Director of Communications for SOARA**

[SOARA Equipment For Sale Online Site](#)

Based on numerous requests from SOARA members for a place to post Ham Radio related items for sale to other club members, we have set up an opt-in based Mailman mailing list on our server. Interested SOARA members are invited to join the mailing list. The SOARA organization and Board of Directors do not provide any warranty or guarantee for the items being advertised, buyer beware!

To subscribe, navigate to:

<https://soara.org/mailman/listinfo/forsale>

Enter your "real" email address, not your at "soara dot org" alias. You must be able to send and receive email from the address you provide.

Once subscribed, you will receive email when other members post items for sale. When posting to the list, you should provide an accurate description of the item for sale, its condition, and asking price. Replies to postings should be sent to the poster of the item, and not the list.

The archives of postings are publicly available on the web here:

<https://soara.org/pipermail/forsale/>

This mailing list may be suspended or discontinued at the discretion of the SOARA Board of Directors should that become necessary.

Brian, NJ6N

[GotoMeeting Information](#)

WHAT TO EXPECT MONDAY EVENING

When you join Monday's meeting, it is highly recommended you use Google Chrome if you plan on entering via browser. It is also recommended to use a headset or earbuds with a mic. Avoid a laptop mic as the speakers that sit right next to the mic tend to produce echo and feedback. Your webcams will be disabled.

The meeting will be locked in order for Soara Board members and our Presenter to arrive first. Please email me if you would like to make an announcement to the other members so I'll know in advance to call on you. You will be in a waiting room until 7pm when I'll open up the meeting. Please keep your microphones muted when not talking. I will Mute all attendees if there is an unmuted mic disrupting the meeting.

You can use the Chat feature to request to ask a question. When, acknowledged, you can unmmute your mic and ask away. You may ask the question in the chat if you prefer and we'll ask the question for you. You may comment as well if you like, just keep it clean. You can also chat with a specific individual privately. Just be sure of what you are saying and where it is going.

As this meeting is open to the public and announced as such on the website, we expect a smooth meeting. If we, by chance, get a disruptive guest they will be Dismissed from the room by the Moderator and the meeting room will then be locked to prevent re-entry.

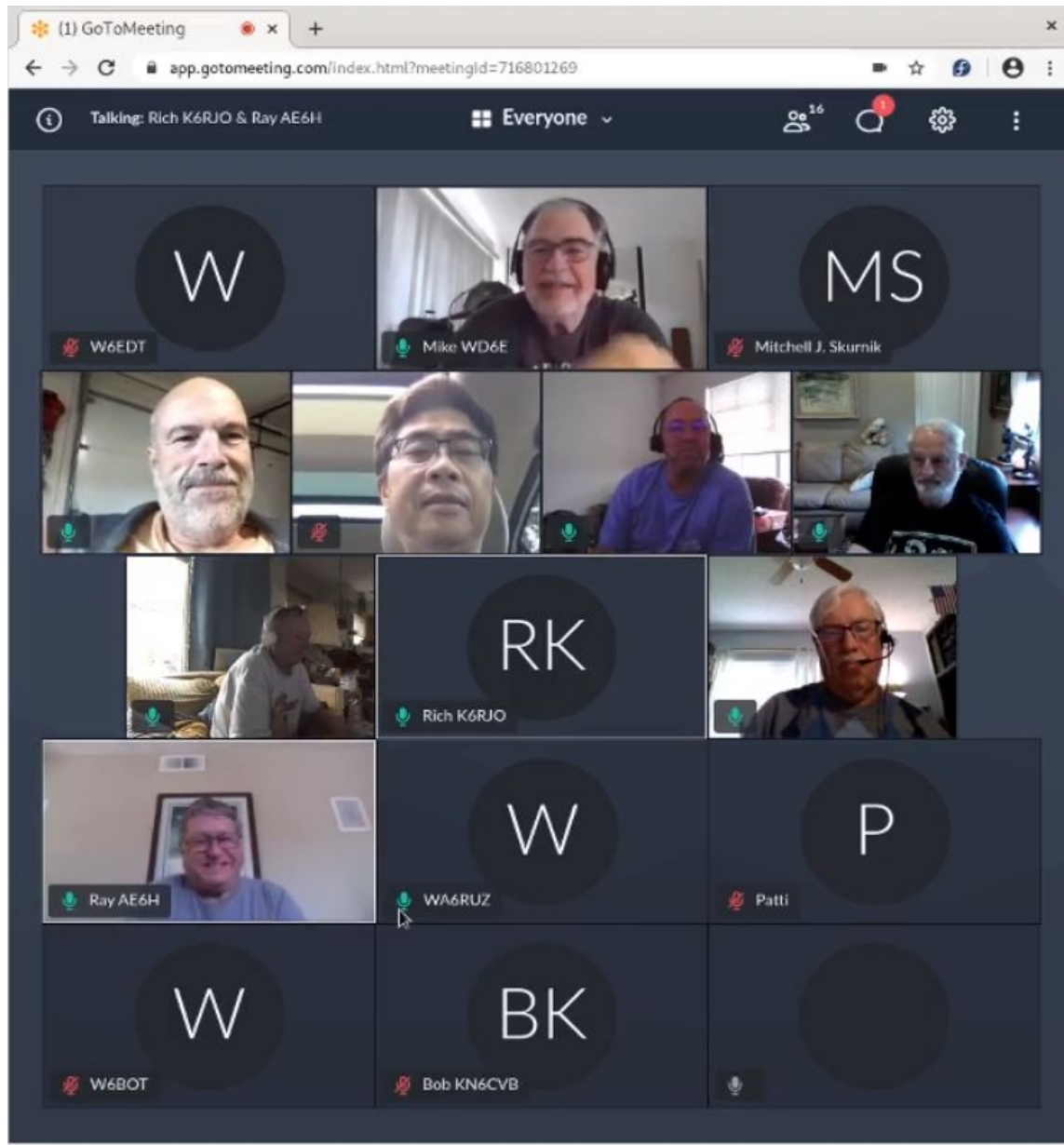
Let's have a great online meeting!

Erik, W6INE

Some additional notes from Dale Tyler. Meeting details and links, etc. will be sent out Monday afternoon and will also be available on the soara.org website.

So far, the only browser that I have seen work is Chrome. The meeting link will look something like SoaraMeeting_ **subject to change - check email or soara.org**). When you follow the link you will see a screen similar to this

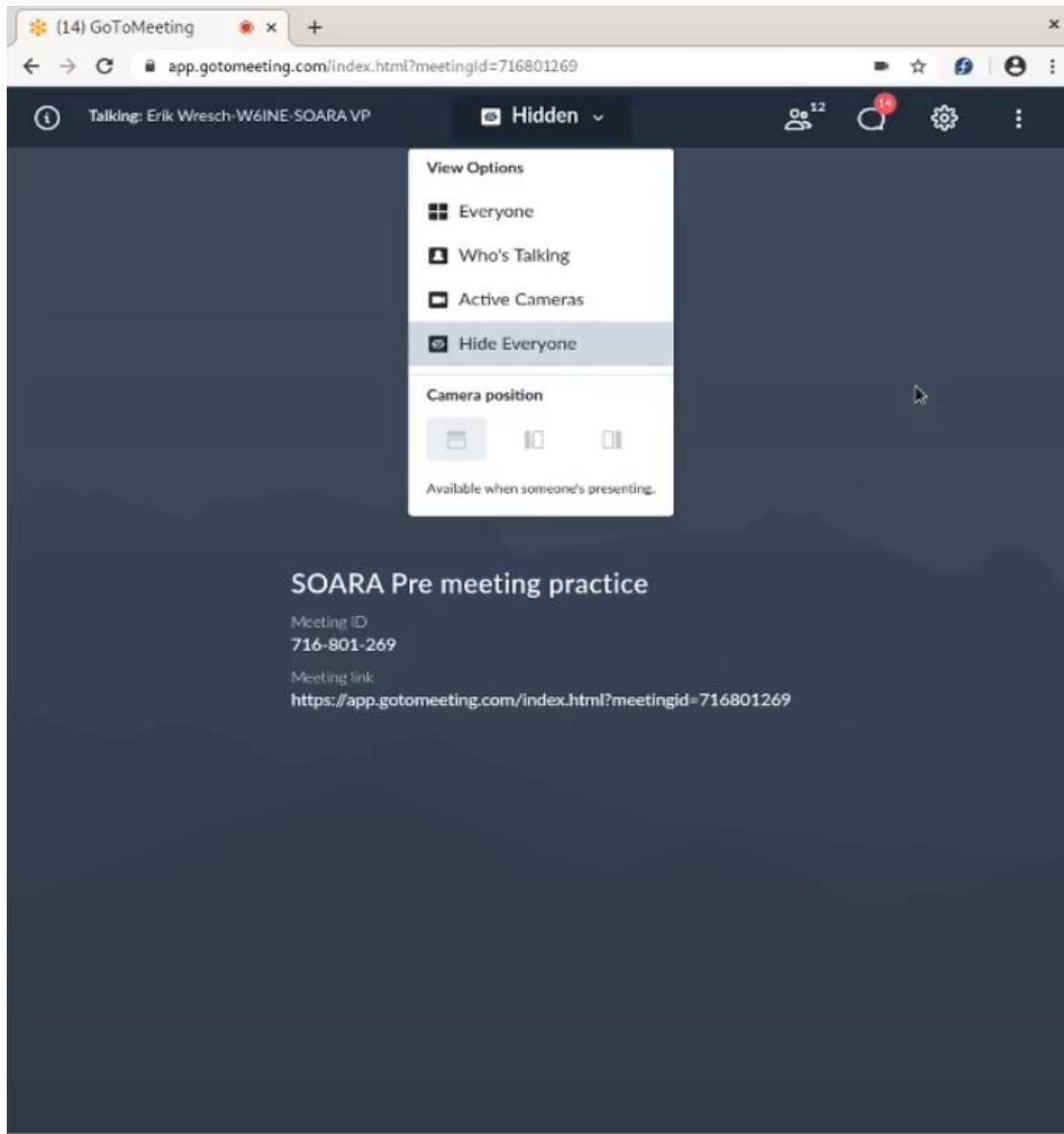
Be sure to choose "Join Meeting in Browser". Next you will have an opportunity to enter your name and ID. Please use your callsign for your ID. For example, I used W6EDT and my name was Dale. If you have previously used GotoMeeting, your name and ID will be stored in cookies associated with the site. You may or may not want to change them,



As was mentioned above, a headphone is best, but as long as you do not unmute your mike, the PC speakers will also work. Once you enter the meeting you will see something like this (I am the “W” in the upper left):

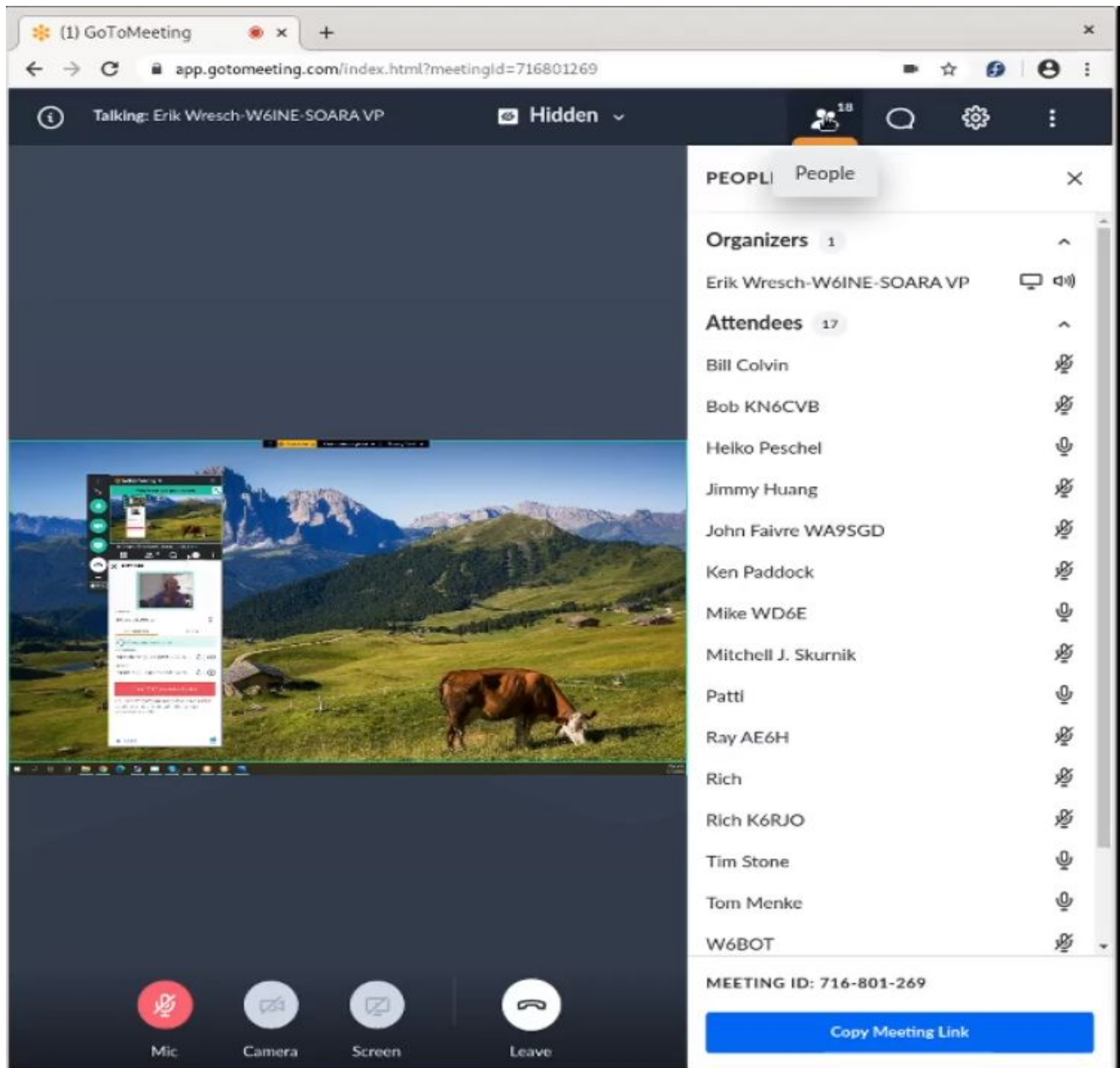
I would suggest you click on 'Everyone' at the top of the screen and change the display to 'Hide Everyone'. This will make the presentation, larger and easier to see.

Contacting Soara: Questions about SOARA? Postal mail: P.O. Box 2545, Mission Viejo, CA 92690
Send e-mail to membership@soara.org or leave a message at 949-667-0173
Facebook: K6SOA Twitter: @K6SOA



Contacting Soara: Questions about SOARA? Postal mail: P.O. Box 2545, Mission Viejo, CA 92690
Send e-mail to membership@soara.org or leave a message at 949-667-0173
Facebook: K6SOA Twitter: @K6SOA

Finally, if you need to update your name or simply want to see who is logged in, use the people icon at the top right of your screen. To update your name or ID, click on your name and press "Edit" in the drop down menu.



Please leave your Mic icon as shown (muted **RED**), which prevents noise at your location from disrupting the meeting.

There will also be a telephone number you can call on a telephone and an access code to allow you to listen to the presentation, if a computer is not available. Please be sure you have unlimited long distance, as the number will not be toll-free.

Contacting Soara: Questions about SOARA? Postal mail: P.O. Box 2545, Mission Viejo, CA 92690
Send e-mail to membership@soara.org or leave a message at 949-667-0173
Facebook: K6SOA Twitter: @K6SOA

If you wish to join the meeting on a phone or tablet, either Android or Iphone, you will need to install the GotoMeeting App from you phone vendors approved 'store' The App is free, but may require certain permissions to function.

If you need help getting connected, please place a call on the Santiago repeater and I'll try to help you.

Also, if you would prefer to watch a live stream on YouTube, the link will be announced on the soara.org web site. The meeting will be available for playback later on YouTube as well.

This is a great way to participate in our club's meetings even when staying home to be safe.

**73,
Dale, W6EDT**

2021 SOARA Calendar

Month	Jan.	Feb.	Mar.	Apr.	May	Jun.	Jul.	Aug.	Sept.	Oct.	Nov.	Dec.
General Meeting 7:00 PM	18	15	15	19	17	21	19	16	20	19	15	-
Program	-	-	-	-	Spring Auction	Field Day Prep	-	SOARA Fair	-	-	-	-
FCC Ham Exam 6:00 PM			15	19	17	21	19	16	20	19	15	-
Education Classes 8:00 AM			13	17	15	19-	17-	14	18	16-	13	-
SOARA Elmer Saturday 9:00 AM	Net Every Sat	Net Every Sat	20	24	22	FD	24	21	25	23	20	-
SOARA T-Hunt 1:00 pm	updates	updates	Updates	Updates	Updates	Updates	Updates	Updates	Updates	Updates	Updates	updates
Board Meeting	25	22	22	26	24	FD-	26	23	27	25	22	-
Special Events	Quartz-fest 17-23	Palm Springs Yuma		Visalia DX	Dayton Ham-vention	ARRL Field Day 25-27	HRO Ham Jam	SOARA Picnic		JOTA 16-18		SOARA Holiday Party
Major HF Contests		ARRL DX-CW 20-21	ARRL DX-SSB 6-7 CQWPX SSB 27-28		CQWPX CW 29-30	ARRL Field Day 25-27			CQWW RTTY	CQWW SSB	CQWW SSB	
Volunteer Events	OC Chili Run	Paws Fur Pink OC Chili Run	OC Chili Run Baker to Vegas	Dessert Storm Rally Ride for Rwanda	HD Trails OC Marathon LH Marathon	ARRL Field Day 25-27	MV Fire-works 4				Vision Quest	

Dates subject to Change - Check the SOARA Web Site (<http://www.soara.org>) to verify locations and times or click on the live links in the table

Contacting Soara: Questions about SOARA? Postal mail: P.O. Box 2545, Mission Viejo, CA 92690
Send e-mail to membership@soara.org or leave a message at 949-667-0173
Facebook: K6SOA Twitter: @K6SOA

SOARA Information

SOARA meets at the Norman P. Murray Center, 24932 Veterans Way, Mission Viejo, CA on the third Monday of every month at 7:00 PM. For the months of January and February the third Monday is a holiday and the meeting is held on the fourth Monday.



License Exams: Amateur License Exams are given prior to SOARA meetings, except June. Exams are at 6pm. Prior registration is not required and walk-in applicants are welcome. For June, exams are held at Field Day. For further information, email Sean Reigle, AJ6B, at aj6b@soara.org.

SOARA Library: SOARA has many amateur radio related books such as hand books, books about electrical theory, etc. available to lend out to club members. Contact Heiko Peschel ad6oi@soara.org for more info.

Web Site: SOARA maintains a web site with current club information. The URL is: <http://www.soara.org/>

Repeaters: The Laguna Beach, San Clemente, and Trabuco repeaters are open. The Santiago Peak repeaters are closed. For details or questions on the repeaters contact the repeater director, or repeater@soara.org.

	2m	—	147.645	-	(110.9)	Laguna Beach
	2m	—	146.025	+	(110.9)	San Clemente
	2m	—	145.240	-	(110.9)	Trabuco
D-STAR	2m	—	146.115	+	(K6SOA C)	Laguna Beach
	220	—	224.100	-	(110.9)	Laguna Beach
	220	—	224.640	-	(pvt)	Santiago Peak. (C)
	440	—	445.660	-	(110.9)	Laguna Beach
D-STAR	440	—	445.705	-	(K6SOA B)	Laguna Beach
	440	—	447.180	-	(pvt)	Santiago Peak. (C)
D-STAR	1.2G		1282.600	-	(K6SOA A)	Laguna Beach

Nets:

- 40 meter HF (7.200 MHz +/- , Sundays @ 8 AM
- 10 meter HF (Technicians Welcome) (28.415 +/-) Sundays @ 9 AM
- General Membership Net - UHF/VHF (447.180, 147.645 & 224.640): Tuesdays @ 8 PM
- Astronomy - VHF 147.645: Wednesdays @ 7 PM
- D-STAR (146.115 C module): Wednesdays @ 8 PM
- Dinner Net - 147.645, 224.640, 447.180: Fridays at 7 PM
- Tech Net - 147.645, 224.640, 447.180: Saturdays @ 9 AM

- California Rescue Communications (Gordo Net) HF (7.250 MHz +/- for QRM): Weekdays @ 8:30AM
- MVRACES - 447.180: Tuesdays @ 7PM
- Tri-Cities RACES - 146.025: Wednesdays @ 7:15PM
- LNACS - 147.645: Thursdays @ 7 PM
- OC Parks Fire Watch - 447.180: Thursdays @ 8 PM

SOARA OFFICERS

President: Ray Hutchinson, AE6H 949-322-8468
ae6h@soara.org

V.P.: Erik Wresch, W6INE 714-883-7694
w6ine@soara.org

Secretary: Dave Southworth ks6rfi@soara.org

Treasurer: James Dahl, WI6X 714-746-8589
w6ix@soara.org

SOARA DIRECTORS

Repeater: Brian Roode, NJ6N 949-257-2749
nj6n@soara.org

Publications: Dale Tyler W6EDT 949-360-1717
w6edt@soara.org

Membership: Ed Barnes, WA6ED 949-468-7706
wa6ed@soara.org

Education: Steve Kuver, K6UVR 949-874-1972
k6uvr@soara.org

Technical: Tom Hobbs, AE6SH 949-830-8131
ae6sh@soara.org

Communications: Heiko Peschel, AD6 949-859-3868
ad6oi@soara.org

SOARA APPOINTMENTS

Past President: Tom Hobbs, AE6SH 949-830-8131
ae6sh@soara.org

Activities Coordinator: Kevin Brouelette, AJ6EE
aj6ee@soara.org

S. Saturdays: Ed Barnes, WA6ED 949-468-7706
wa6ed@soara.org

Raffle: Bill Colvin KM6FOY km6foy@soara.org

Testing: Steve Kuver K6UVR k6uvr@soara.org

Website: Vacant

@soara.org

Ambassador: Spencer Ammermon, NG6K
ng6k@soara.org

Contacting Soara: Questions about SOARA? Postal mail: P.O. Box 2545, Mission Viejo, CA 92690
Send e-mail to membership@soara.org or leave a message at 949-667-0173
Facebook: K6SOA Twitter: @K6SOA